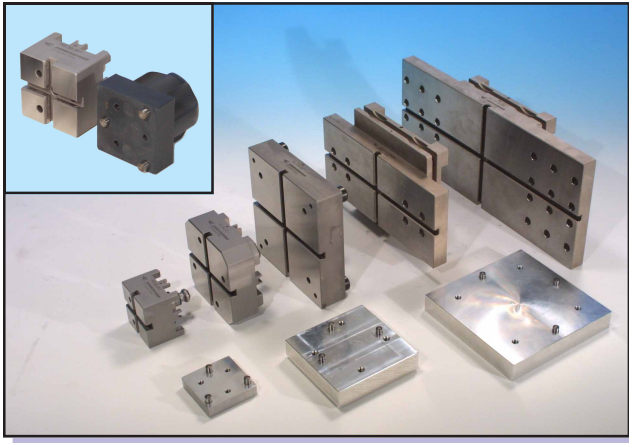


# 3-Pin Pallet & Referencing System

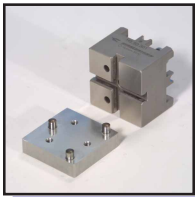
Designed for accurate and rigid mounting of electrodes and workpieces  
Easier to use and more accurate than captive two-dowel pin systems



The 3-Pin pallets allow the use of rough sawn electrode materials. Only one side of the electrode material needs to be qualified with three dowel pins and tapped holes. Dowel pin positions on the electrode can be positioned anywhere within the slotted area.

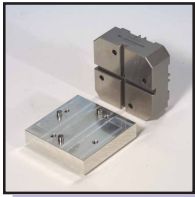
The 3-Pin Pallet system eliminates the high cost of storing electrodes on pallets or shanks. Only the electrodes themselves need be stored. The 3-Pin holders are used for both manufacturing and holding of the electrodes in the EDM.

*Aluminum sub-plates are also available for use when direct mounting of the electrode is not desirable.*



**H5.50.301** 3-Pin 50mm Pallet for electrodes up to approximately 4" square

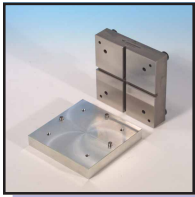
**H5.50.311** Aluminum 50mm sub-plate with 3 pins and threaded holes  
(Electrodes can be attached with glue or screws)



**H8.88.301** 3-Pin 88mm Pallet for electrodes up to approximately 6" square

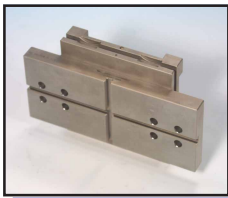
**H8.88.311** Aluminum 88mm sub-plate with 3 pins and threaded holes  
(Electrodes can be attached with glue or screws)

*HIRSCHMANN claspers with additional "Z" supports are recommended for use with the following holders*

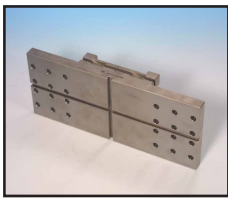


**H8.128.301** 3-Pin 128mm Pallet for electrodes up to approximately 8" square

**H8.128.311** Aluminum 128mm sub-plate with 3 pins and threaded holes  
(Electrodes can be attached with glue or screws)



**H8.88/128.0.301** 3-Pin 88mm x 200mm pallet for electrode sizes up to 6" x 12".



**H8.128.0.301** 3-Pin 128mm x 300mm pallet for electrode sizes up to 8" x 16".



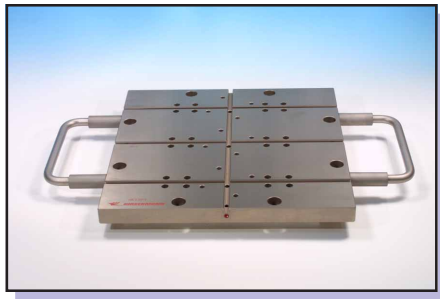
**HIRSCHMANN**

## The 3-Pin Concept for Hirschmann 8000 Series

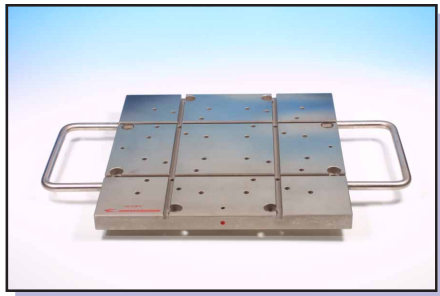
The 3-PIN 8000 series clampers and pallets enable the manufacturing of multiple electrodes in one set-up. They can also be used to palletize workpieces on the EDM table as well as the tables of machining centers, mills, grinders, etc.



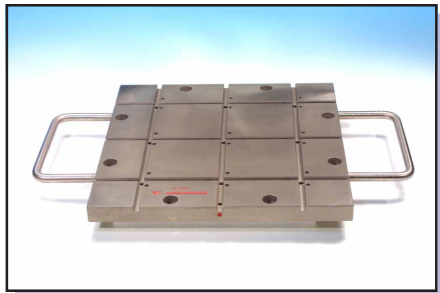
**HE8.320P** Manual 3-Pin base for mounting onto the machine table. Features hardened inserts in a pre-hard base. Equipped with a precision ground center hole for location pick-up. This unit accepts the pallets shown below as well as all 3-Pin manufacturing pallets shown in the Series 8000 catalog.



**H8.320P3** Three position 3-Pin manufacturing pallet for electrodes designed for use on the following 3-Pin holders: H8.88.301, H8.88/128.0.301, H8.128.0.301. Mounts to the HE8.320P base shown above or can be used with the H8.320P pallet and H8.11.32 clamper shown in the 8000 catalog. Also mounts to the H8.11.32P base.



**H8.320P4** Four position 3-Pin manufacturing pallet for electrodes designed for use on the following 3-Pin holders: H8.88.301, H8.128.301. Mounts to the HE8.320P base shown above or can be used with the H8.320P pallet and H8.11.32 clamper shown in the 8000 catalog. Also mounts to the H8.11.32P manual base.



**H8.320P9** Nine position 3-Pin manufacturing pallet for electrodes designed for use on the H5.50.301 3-Pin holders. Mounts to the HE8.320P base shown above or can be used with the H8.320P pallet and H8.11.32 clamper shown in the 8000 catalog. Also mounts to the H8.11.32P manual base.



# HIRSCHMANN

HIRSCHMANN ENGINEERING USA, INC.  
PHONE: (847) 468-9700

165 E. Commerce Dr Ste 104  
FAX: (847) 468-9701

Schaumburg, IL 60173  
E-MAIL: [info@hirschmannusa.com](mailto:info@hirschmannusa.com)

[www.hirschmannusa.com](http://www.hirschmannusa.com)