

Reference-Set HPF 5000 *PrisFIX*

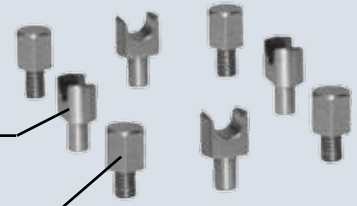
HPF 5000 Referenz-Set *PrisFIX*

The “Low Cost” reference set *PrisFIX* is an inexpensive solution for mounting of electrodes and workpieces in the HIRSCHMANN Fixturing system 5000. The components at the right are mounted to the electrode, pallet or workpiece using threaded and drilled holes (via adhesive) and rigidity set in a Hirschmann clamber for completion.

set consist of:

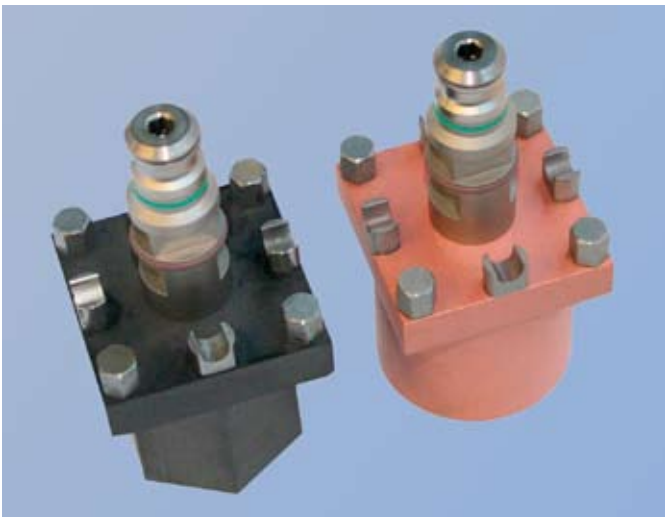
(4) X-Y-reference prisms

(4) Z-referenc columns
with threads

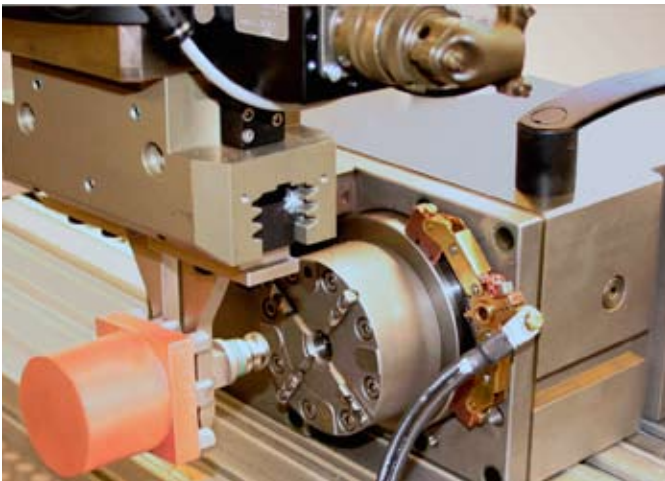


Features

- Automatic loading and un-loading
- Inexpensive, direct to the electrode (no pallet necessary)
- Precise positioning, repeatable accuracy ≤ 0.002 mm
- Reliable precise loading (no intermittent “bad grips” possible)
- For copper and graphite electrodes and tooling (round or square)
- Simple and fast mounting
- For use with all clamping journals



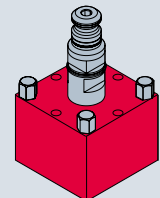
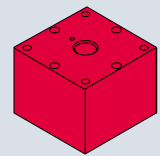
PrisFIX installed on graphite and copper electrodes with H6.611 Journals



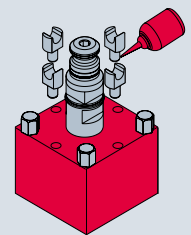
Automated Loading (via robot)

Simple and quick mounting:

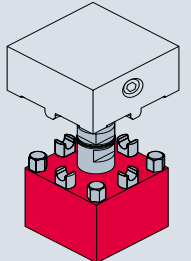
1. Drill and thread the mounting pattern in a blank.
2. Screw in the “Z” reference columns and clamping journal (either) H5.611 or H6.611.



3. Place the X & Y Reference prisms with special adhesive, in the drilled holes.



4. Align and set the X & Y prisms by gripping the assembly in a Hirschmann clamber until the adhesive firmness has been reached (a few minutes).



- 5.) Remove the blank from the clamber.
Ready for use!

